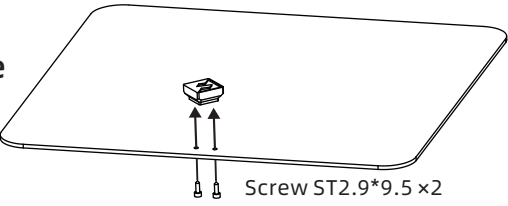


Step 21

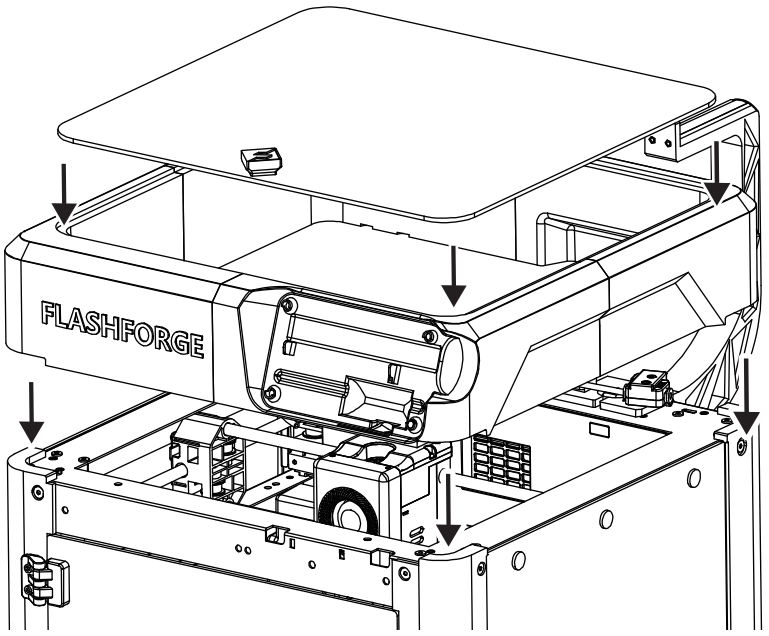
Install the Top Cover Handle

Secure the top cover handle to the top cover with two ST2.9*9.5 screws.



Step 22 Install the Riser and Top Cover

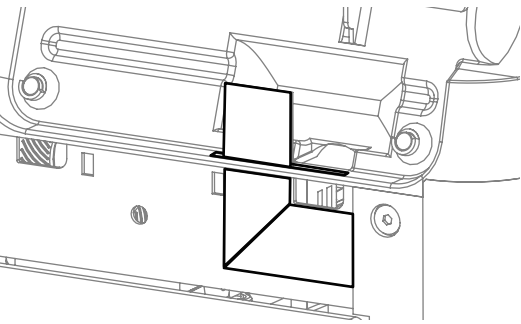
Install the assembled riser and top cover on the top of the machine.



Step 23

Locate the Screen Cable

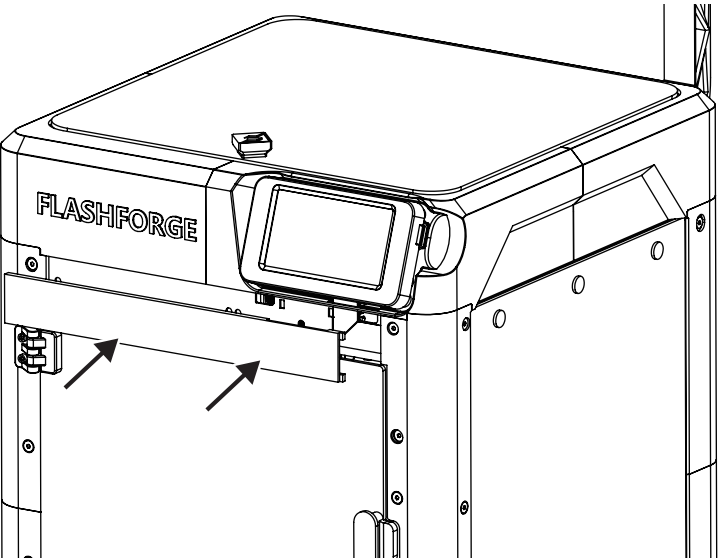
Fold the screen cable and thread it through the cable hole.



11

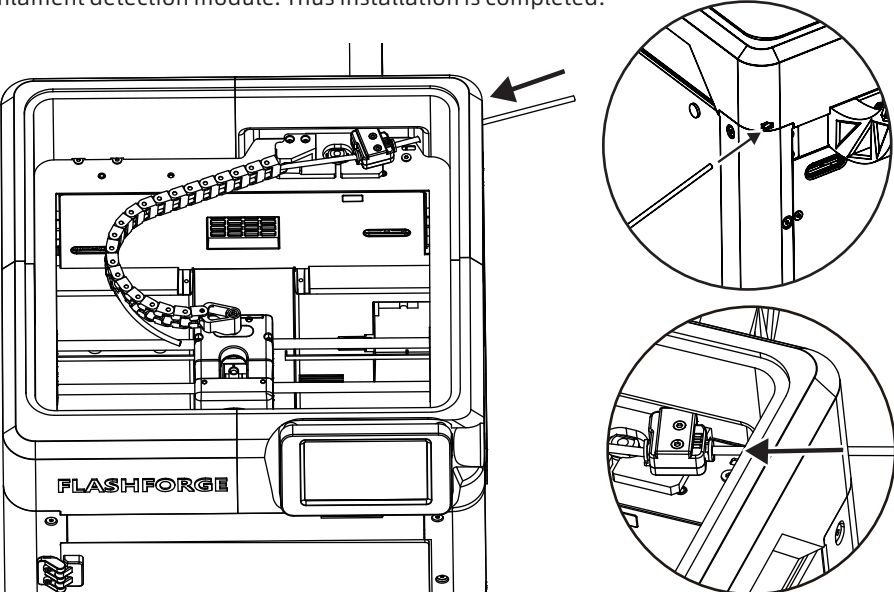
Step 25 Install the Shielding Plate

Insert the shielding plate between the assembled riser and the front door plate (align with the holes and press directly).



Step 26 Install the External Filament Guide Tube

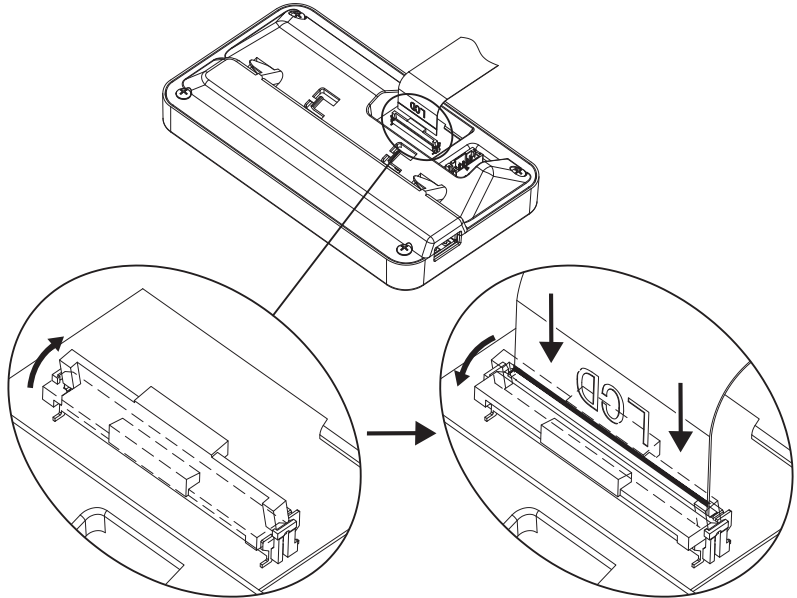
Thread the other filament guide tube through the machine hole, and insert it into the filament detection module. Thus installation is completed.



13

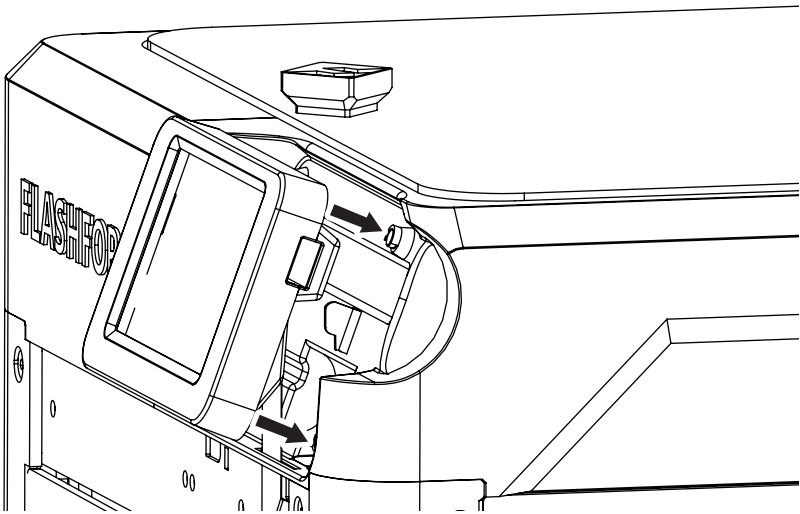
Step 24 Install the Screen

Insert the screen cable and install the screen.
Note: Ensure proper insertion and check alignment of the indicator line with the socket.



Open the latch

Insert the cable and close the latch



12

Thank you very much for choosing FLASHFORGE 3D printer!

We sincerely appreciate your trust and support. Assembling a 3D printer can be a challenge, but we believe your efforts will worth it.

We're grateful for your enthusiasm about our product. Your choice goes beyond a simple purchase; it's a vote of confidence in innovation and technology. With each assembly step, you're getting closer to exploring endless possibilities.

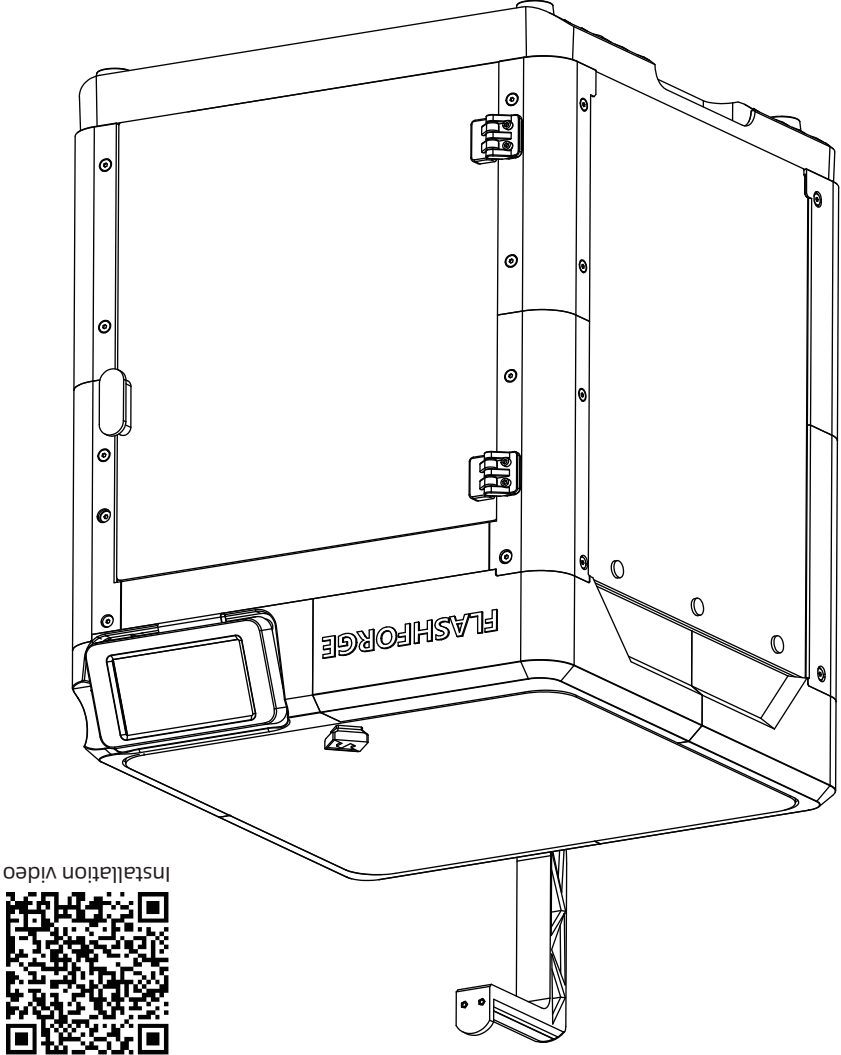
If you encounter any issues during assembly, our customer service team is always ready for you. We look forward to seeing your 3D printer bring you a fantastic experience.

Once again, thank you for being our valued user. We hope our product not only meets but also exceeds your expectations.

Wishing you great success in creation!

14

This Guide is only applicable to FLASHFORGE Adventurer 5M 3D printer.



Installation Guide

Adventurer 5M(Enclosed Version)

EN - A03

FLASHFORGE

Accessory Package Contents

Top Cover	Front Door Plate	Side Plate x2	Drag Chain
Drag Chain Clip	Extruder Top Cover	PTFE Tube (91mmx2)	PTFE Tube (150mm)
PTFE Tube (515mm)	Screw ST2.9*9.5 x11	Screw M3*8 x7	Screw M4*6 x20
Screw M3*25 x2	Screw M3*20 x2	Screw M3*16	Nut M3 x7
		<p>Note: 1. Please prepare 2.0mm and 2.5mm Allen wrenches, and a Phillips screwdriver for installation. As screw types may vary, images are for reference only; please select tools according to the actual screws. 2. Some screws and magnets are provided as spare parts. Please follow this Guide for installation. Flashforge reserves the right of the final interpretation of this Guide.</p>	
Magnet 5*2 x33	Toolkits		

1

Follow us



Adventurer 5M enclosure tutorial info is available at Flashforge Wiki for viewing and download.
For more information, you can visit the Flashforge official website.
www.flashforge.com - [Support]



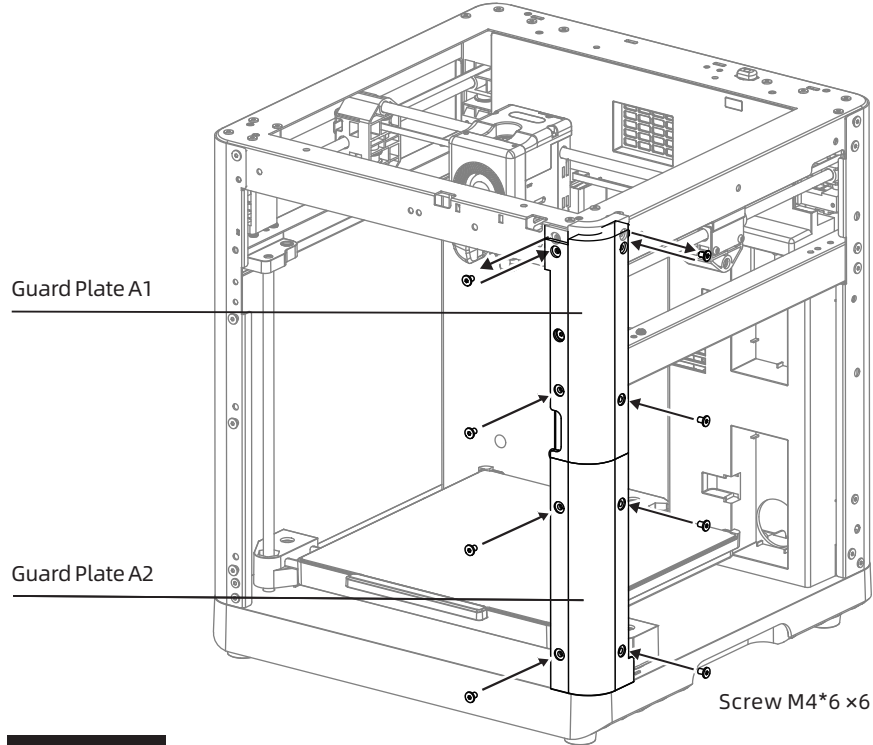
Parts List

Guard Plate A1	Guard Plate A2	Guard Plate B1	Guard Plate B2
Guard Plate C1	Guard Plate C2	Guard Plate D1	Guard Plate D2
Hinge x2	Spool Holder	Front Door Handle	Top Cover Handle
Drag Chain Fixing Clip	Magnet Holder x6	Riser A	Riser B
			<p>Note: Download the listed parts from Flashforge official website to print them. https://www.flashforge.com/download-center * Guard plates with markings inside</p>
Riser C	Riser D	Shielding Plate	

2

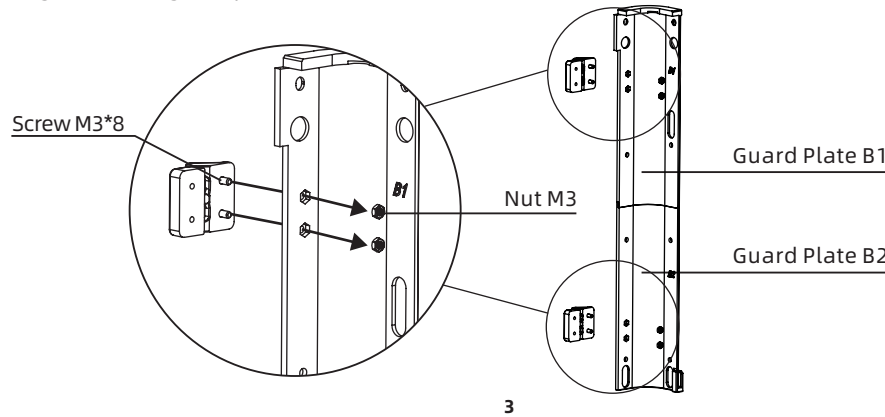
Step 1 Install Guard Plates A1 and A2

1. Assemble the guard plates A1 and A2.
2. Remove the top two M4*6 screws from the machine, then install the assembled guard plates A1 and A2 and lock them, and secure them with six M4*6 screws. Re-install the two M4*6 screws.



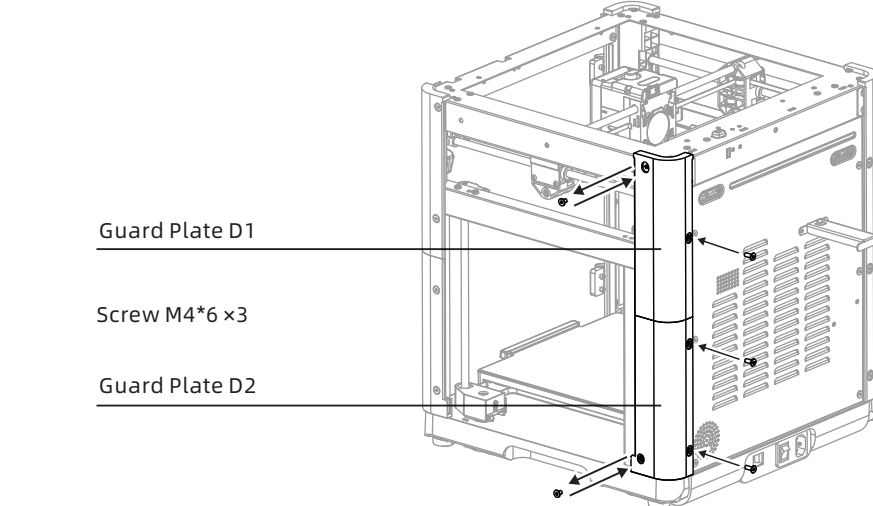
Step 2 Install Hinges

1. Assemble the guard plates B1 and B2.
2. Insert four M3 nuts into the slots of the guard plates, and then fix the upper and lower hinges onto the guard plates with four M3*8 screws.



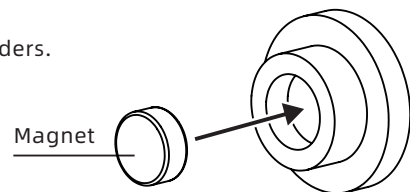
Step 5 Install Guard Plates D1 and D2

1. Assemble the guard plates D1 and D2.
2. Remove the two screws from the right rear side of the machine, install the assembled guard plates D1 and D2 and lock them, and secure the back with three M4*6 screws. Re-install the two M4*6 screws.



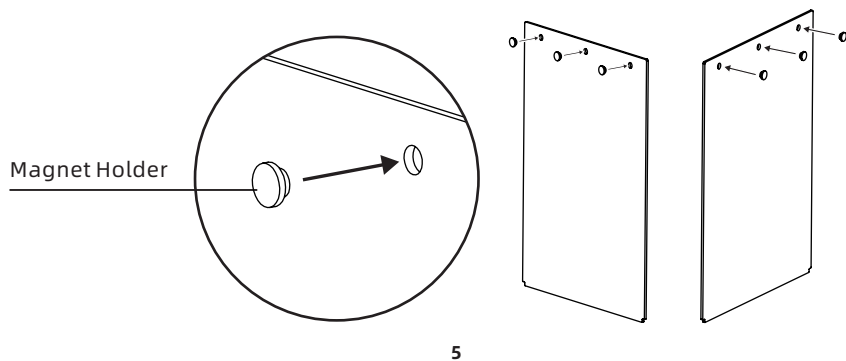
Step 6 Install Magnets

Press the six magnets into the six magnet holders.



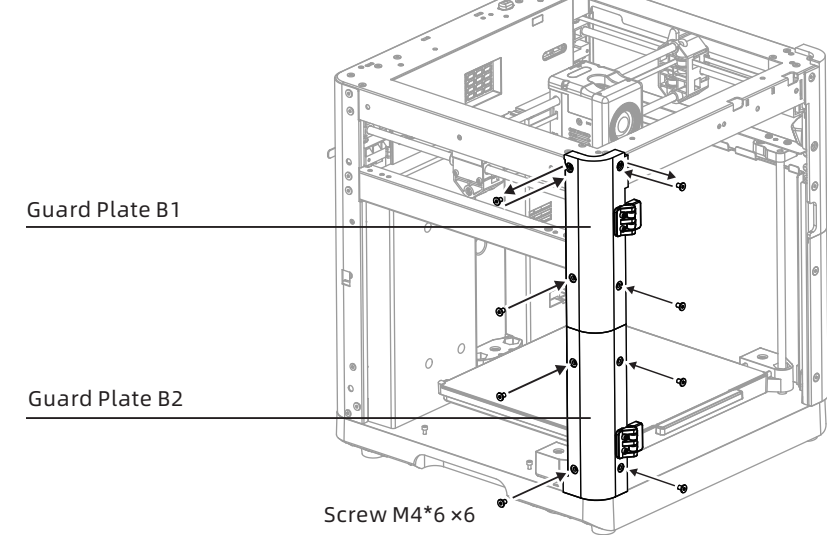
Step 7 Install Magnet Holders

Fix the above magnet holders into the holes on the left and right side plates with instant adhesive.



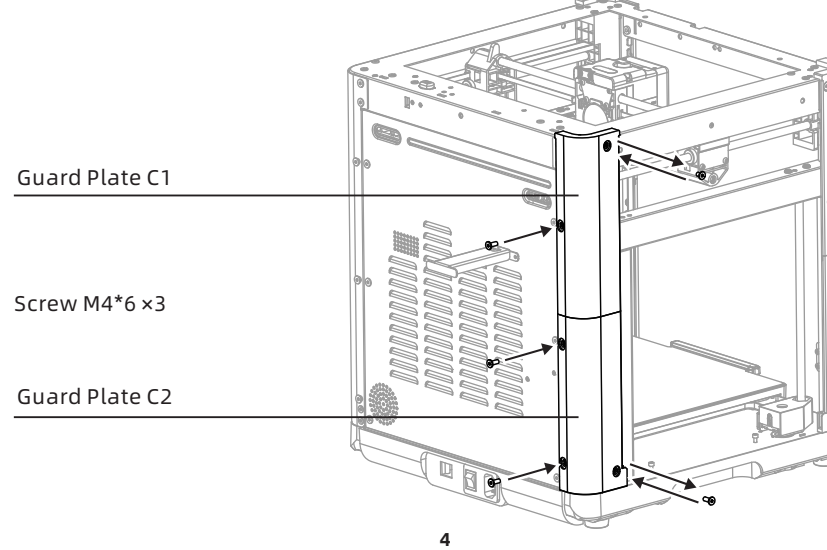
Step 3 Install Guard Plates B1 and B2

Remove the top two M4*6 screws from the machine, then install the guard plates B1 and B2 with hinges installed and lock them, and secure them with six M4*6 screws. Re-install the two M4*6 screws.



Step 4 Install Guard Plates C1 and C2

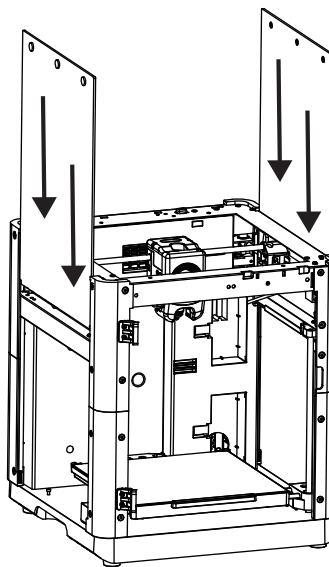
1. Assemble the guard plates C1 and C2.
2. Remove the two screws from the left rear side of the machine, install the assembled guard plates C1 and C2 and lock them, and secure the back with three M4*6 screws. Re-install the two M4*6 screws.



Step 8

Install Side Plates

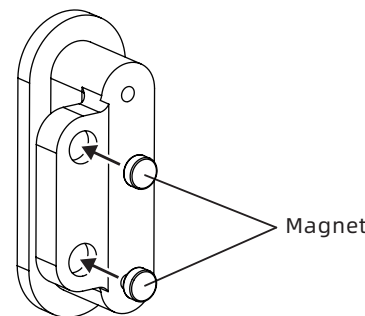
Insert the left and right side plates with the magnet holders installed along the guard plates into the slots.



Step 9

Install Magnets into the Front Door Handle

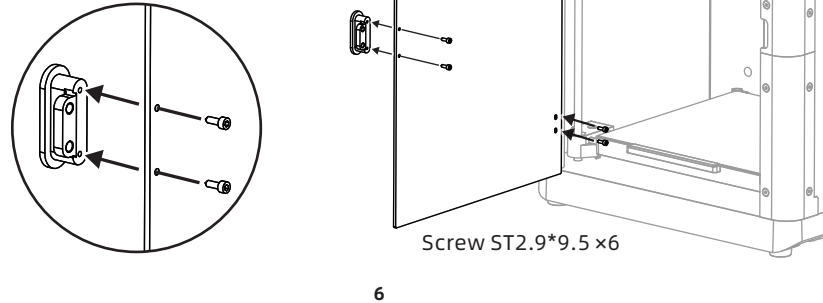
Apply a small amount of instant adhesive to the holes in the front door handle, and then press two magnets into the holes.



Step 10

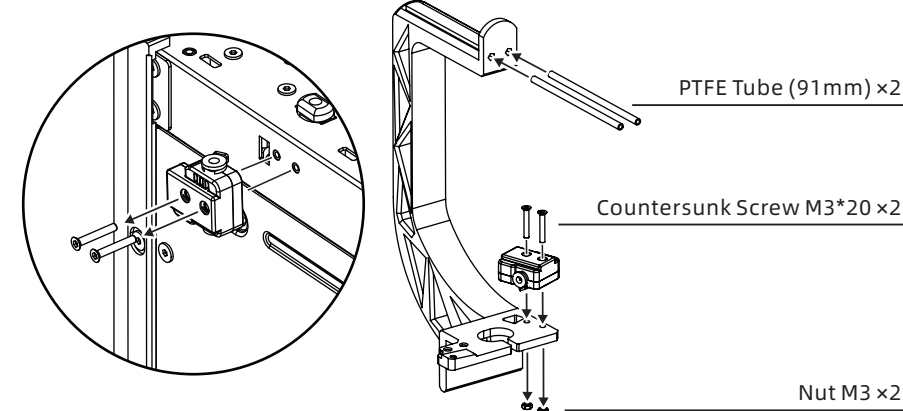
Install the Front Door Plate and Front Door Handle

1. Secure the front door handle to the front door plate with two ST2.9*9.5 screws.
2. Secure the front door plate to the hinge with four ST2.9*9.5 screws.



Step 11 Install the PTFE Tube and Filament Sensor

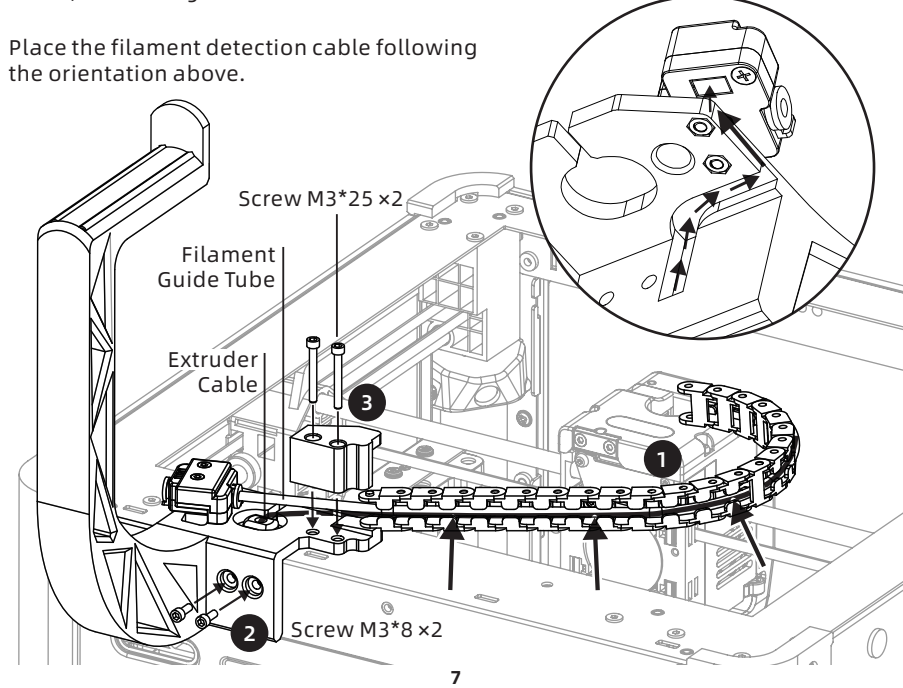
1. Insert two 91 mm-long PTFE tubes into the holes on the spool holder.
2. Secure the previously removed filament sensor using two M3*20 countersunk screws and two M3 nuts.



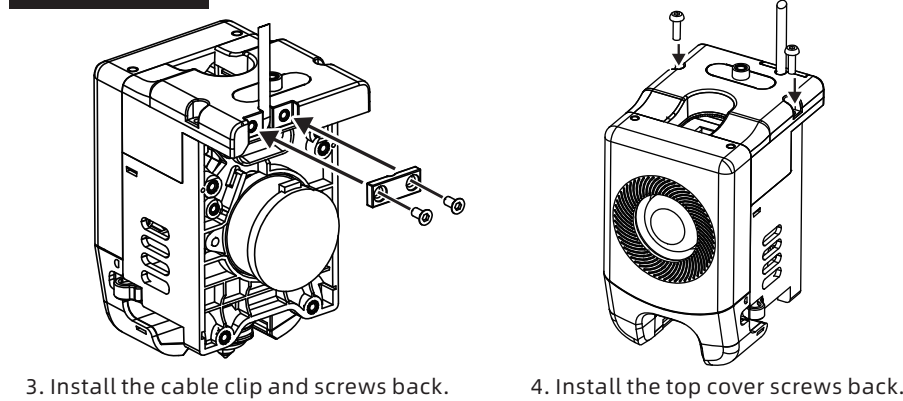
Step 12 Install the Spool Holder and Drag Chain

1. Press the extruder cable and filament guide tube through the opening into the drag chain.
2. Secure the spool holder to the machine with two M3*8 screws (note: the filament detection cable can be placed in the cable groove, as shown below).
3. Pass two M3*25 screws through the drag chain fixing clip, install the drag chain as shown below, and then tighten the screws.

Place the filament detection cable following the orientation above.

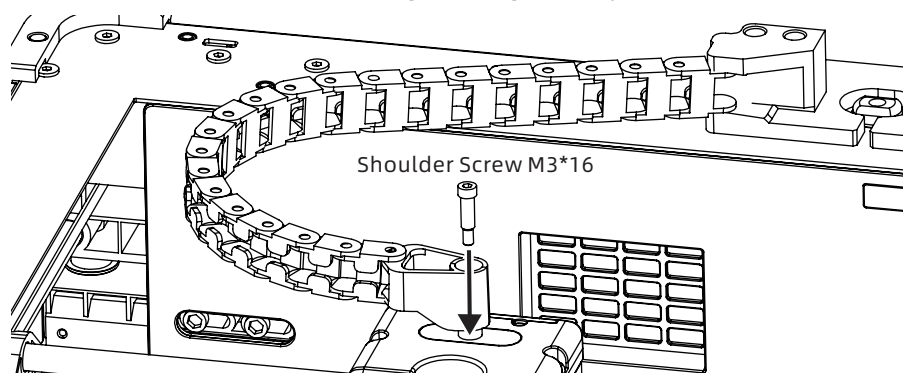


Step 15-2



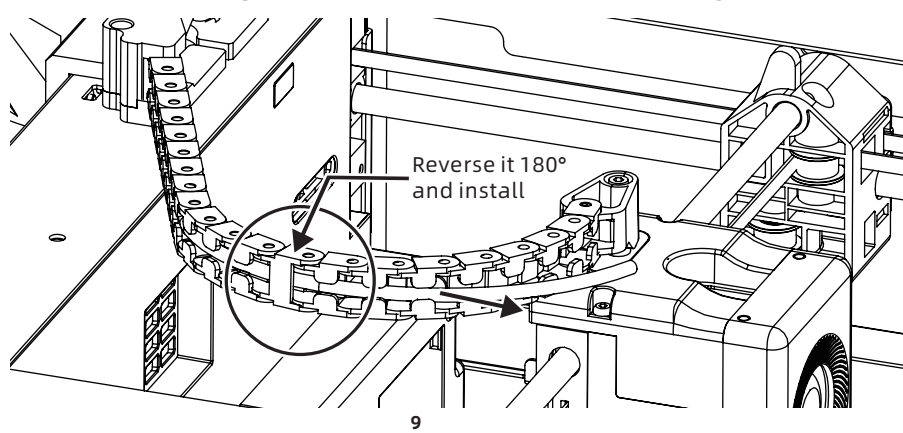
Step 16 Install the Shoulder Screw

Secure the M3*16 shoulder screw through the drag chain clip onto the new extruder cover.



Step 17 Adjust the Ninth Section of the Drag Chain

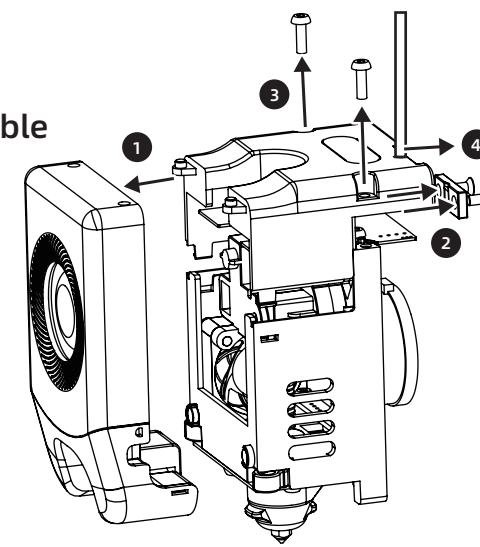
1. After separating the ninth section of the drag chain, reverse it by 180° before inserting it back in.
2. Thread the filament guide tube out from the ninth section of the drag chain.



Step 13

Remove the Front Cover, Top Cover, and Extruder Cable

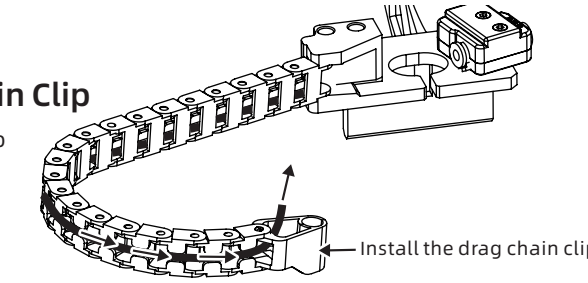
1. Remove the front cover.
2. Remove the cable clip.
3. Remove the top cover screws and the top cover.
4. Pull the extruder cable out of the extruder board (be sure to pull out the terminal).



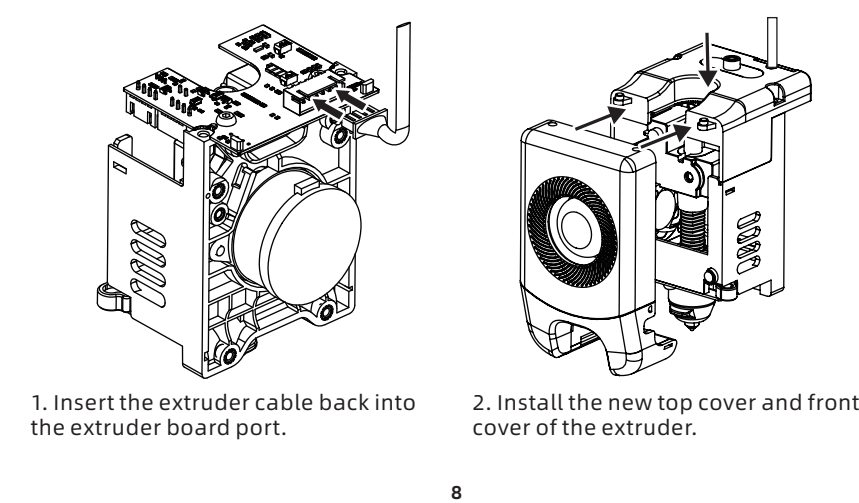
Step 14

Install the Drag Chain Clip

1. Connect the drag chain clip with the drag chain.
2. Thread the extruder cable out of the drag chain clip (as shown in the figure).

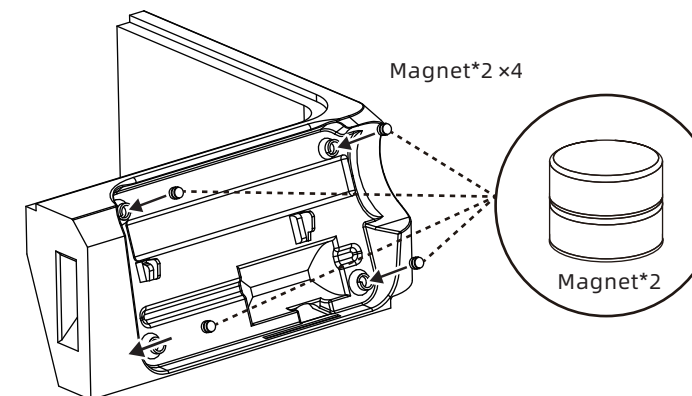


Step 15-1 Install the Extruder Cable and New Top Cover



Step 18 Install Magnets into Riser A

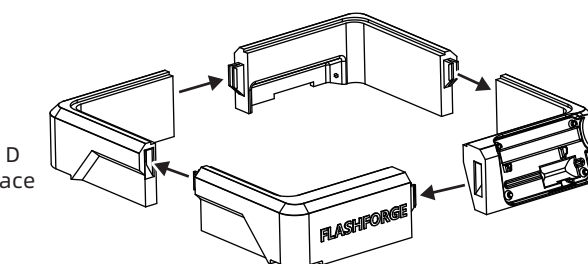
Combine two magnets and insert them into the magnet holes in the riser A; repeat for a total of 4 holes (fix it with instant adhesive).



Step 19

Assemble Risers

Assemble the risers A, B, C, and D as shown below (snap it into place until you hear a click).



Step 20

Install Magnets into the Bottom of Risers

Fix the magnets in the slots on the bottom of the assembled riser using instant adhesive (15 in total).

